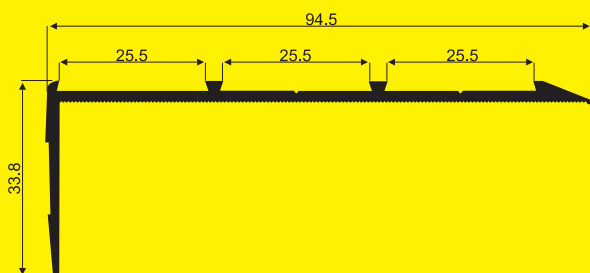
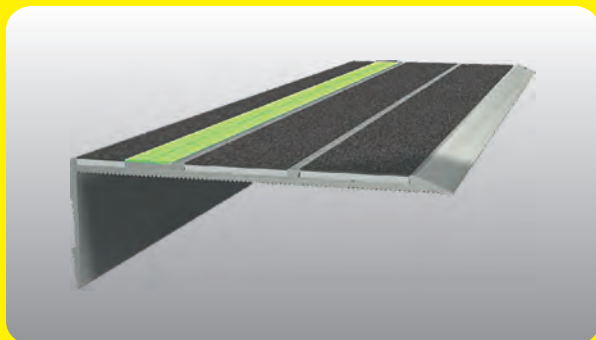


ARCHITECTURAL STAIR NOSINGS

- ▲ Integrate reliable non-slip surfacing with luminescent escape routing
- ▲ Super high performance capability to integrate with emergency escape systems
- ▲ Performance exceeds all anti-slip standards for stairs
- ▲ Versatile mix and match colour variations available
- ▲ Practical, universal-fitting profiles for both new and retrofit applications

EDGE DEFINING - NON SLIP - GLOW IN THE DARK



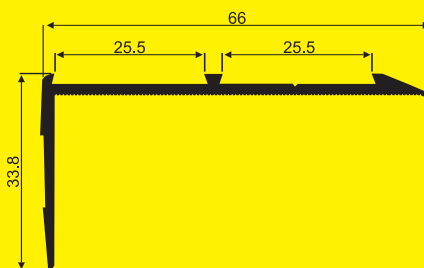
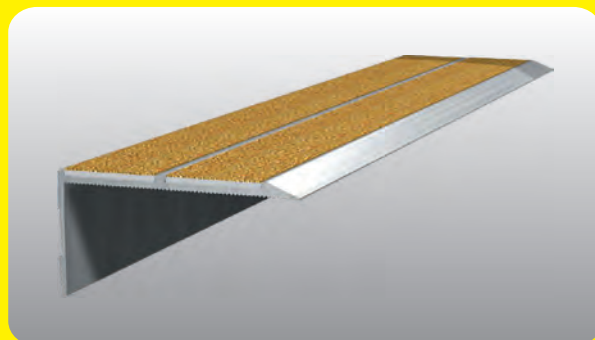
PRODUCT CODE ALN3

APPLICATION GENERAL USAGE
ASMAT INSERTS & GLOWSTRIP
CAPABLE (FRONT & TOP)

BASE MATERIAL 6060 T5 ALUMINIUM - ANODISED

MAXIMUM LENGTHS EXTRUSION 5.0M/FRICTION INSERTS 2.4M
GLOWSTRIPS 3M

DESIGN



PRODUCT CODE ALN2

APPLICATION GENERAL USAGE
ASMAT INSERTS & GLOWSTRIP
CAPABLE (FRONT & TOP)

BASE MATERIAL 6060 T5 ALUMINIUM - ANODISED

MAXIMUM LENGTHS EXTRUSION 5.0M/FRICTION INSERTS 2.4M
GLOWSTRIPS 3M

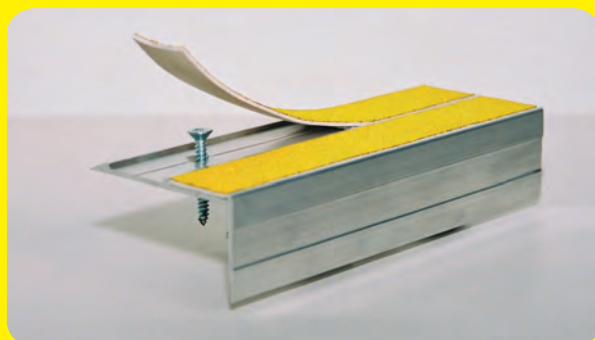
DETAILS



SCREW FIXING 8G x 25 (1") C/SUNK

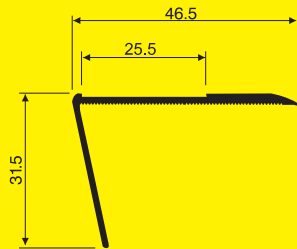
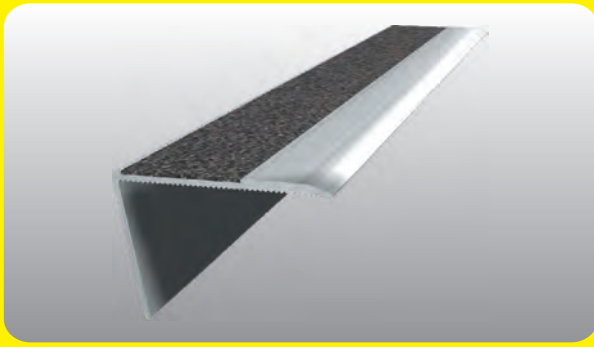
NYLON PLUG FOR CONCRETE 5 X 25 (1")

FIXING



SCREW FIXING 8G x 25 (1") C/SUNK

NYLON PLUG FOR CONCRETE 5 X 25 (1")



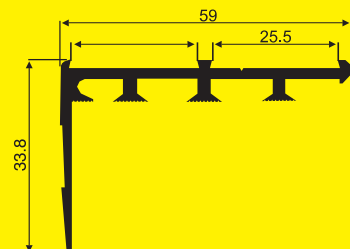
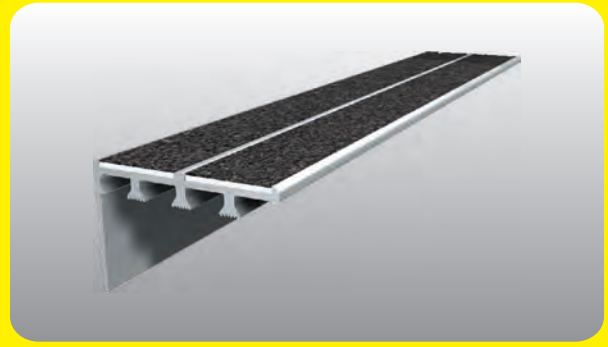
PRODUCT CODE ALN1

APPLICATION EMERGENCY AND SERVICE STAIRS
GRIP TAPE INSERTS - NOT GLOWSTRIP CAPABLE

BASE MATERIAL 6060 T5 ALUMINIUM - MILL FINISH

MAXIMUM LENGTHS EXTRUSION 5.0M/INSERTS 1.8M

DESIGN



PRODUCT CODE ALNCP

APPLICATION CARPET NOSING
ASMAT INSERTS & GLOWSTRIP
CAPABLE (FRONT & TOP)

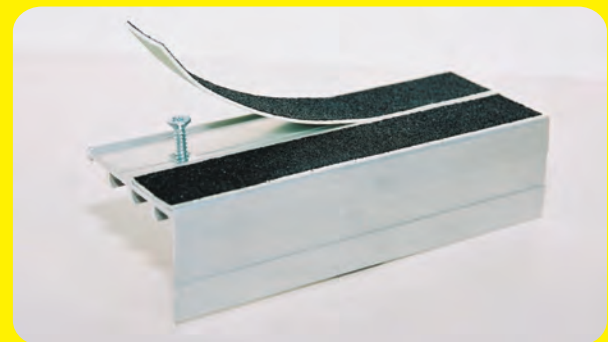
BASE MATERIAL 6060 T5 ALUMINIUM - ANODISED

MAXIMUM LENGTHS EXTRUSION 5.0M/FRICTION INSERTS 2.4M

DETAILS



ADHESIVE FIXING URETHANE CARTRIDGE ADHESIVE/SEALANT



SCREW FIXING 8G x 25 (1") C/SUNK

NYLON PLUG FOR CONCRETE 5 X 25 (1")

FIXING



THE ULTIMATE IN ANTI-SLIP AND WAY FINDING SYSTEMS

- ▲ **GLOWSTRIP** is a super high performance, self charging photoluminescent material set into a fine aluminium extrusion. In darkness or in times of emergency each stair nosing will glow brightly and clearly define the path to safety. No electrical connections required. 100% reliable performance. Hours of reliable luminance. Place one or more Architectural Stair Nosings in any of the rebates of the Architectural Nosings together with the non-slip ASMAT inserts.
- ▲ **ASMAT** anti-slip inserts are highly non-slip and extremely durable. This exclusive material is formed from permanently bonding diamond hard abrasive to a stable PVC base material that then inlays into the body of the ARCHITECTURAL NOSING.
- ▲ **ASMAT** exceeds all relevant standards with an extremely high coefficient of friction of 1.10. Colour range is available with custom colouring on request.

www.safetystep.com